

DE LO HUMANO A LO COMUNITARIO





**DE LO
HUMANO
A LO
COMUNITARIO**



Capullitos
Escuela de Educación Infantil

GLU
HUMANITARIAN



**DE LO
HUMANO
A LO
COMUNITARIO**





ÉTICA, NATURALEZA Y SOCIEDADES



ÉTICA, NATURALEZA Y SOCIEDADES



A large, weathered wooden sign is the central focus, framed by a thick rope. The sign is decorated with a cowboy hat on the top left, a horseshoe on the top right, and a red bandana on the bottom right. The text on the sign is written in large, bold, yellow letters with a blue outline. The background of the sign is a light tan color. The overall scene is set in a vibrant, cartoonish Western landscape with a blue sky, white clouds, a bright sun, green trees, a wooden fence, and a cactus.

ÉTICA, NATURALEZA Y SOCIEDADES



SABERES Y PENSAMIENTO CIENTÍFICO



SABERES Y PENSAMIENTO CIENTÍFICO



SABERES
Y

PENSAMIENTO
CIENTÍFICO





SABERES

Y

PENSAMIENTO CIENTÍFICO



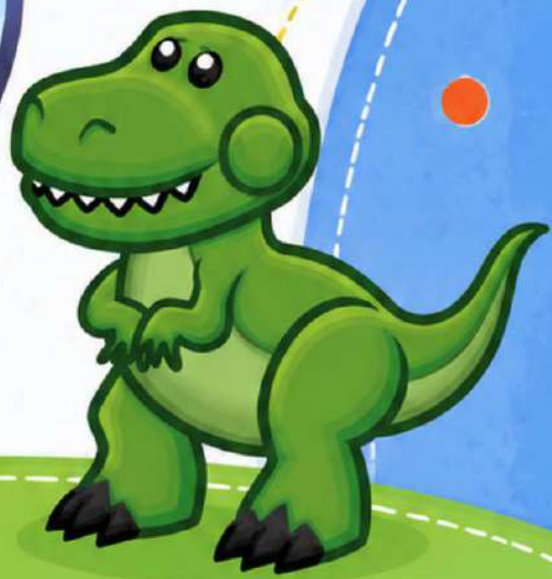
LENGUAJES



LENGUAJES



LENGUAJES



LENGUAJES



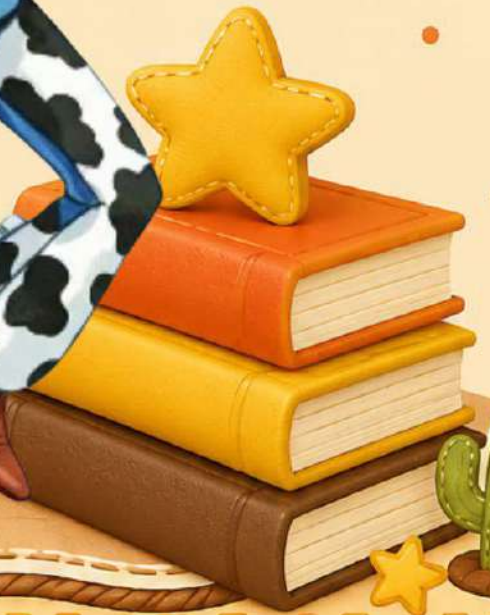
LENGUAJES



LENGUAJES



LENGUAJES



LENGUAJES



Capullitos
maternal y primaria

LENGUAJES

