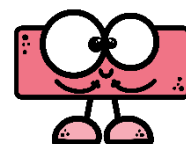
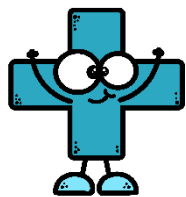


Resuelve el siguiente crucigrama:



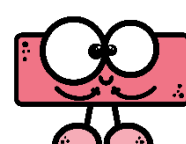
8	-	3	=		
				+	
				2	
				=	
	+	1	=		
-					
3					
=					
	+	7	=		
				-	
				5	=
					-
					4
					=







Resuelve el siguiente crucigrama:



		9	-		=	2			
		-							
				-					
				4					
				=					
					+	11	=		
									-
									6
									=
					=	2	+		
					=				
					5				

