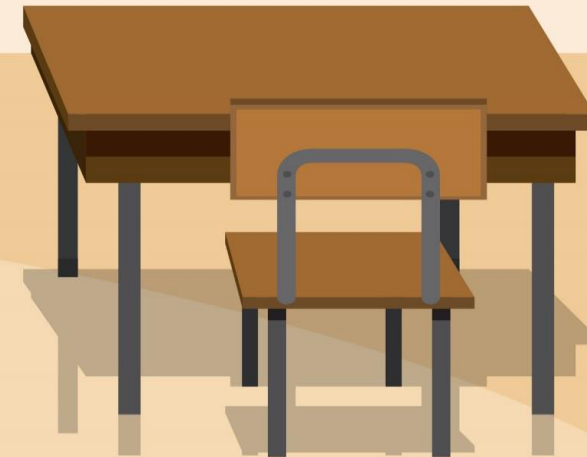
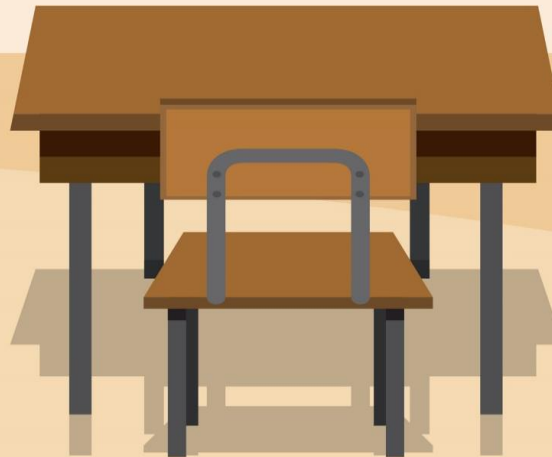
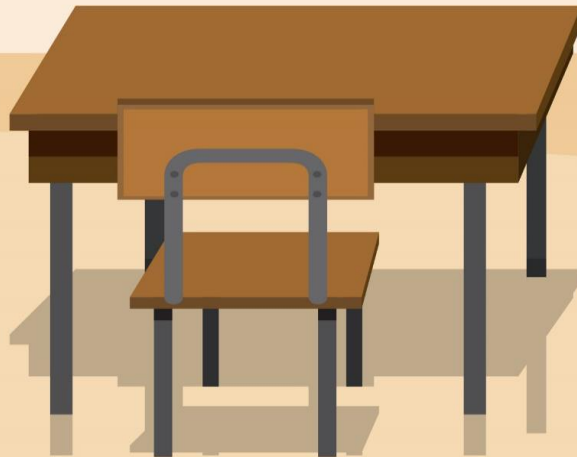
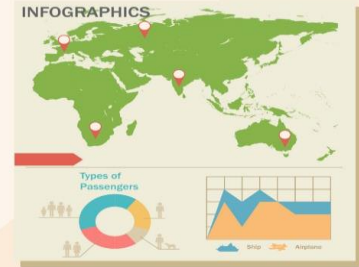
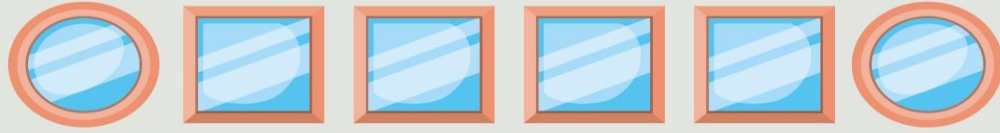




CURSO 2021/2022







$2 \times 1 = 2$ $2 \times 4 = 8$
 $2 \times 2 = 4$ $2 \times 5 = 10$
 $2 \times 3 = 6$ $2 \times 6 = 12$

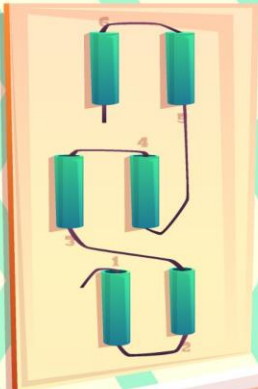



O

G

S

H





**CURSO
2021/2022**

Co Ni Sn Pb H₂ Cu Ag Hg

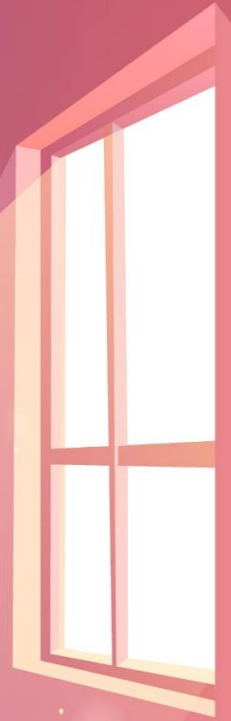


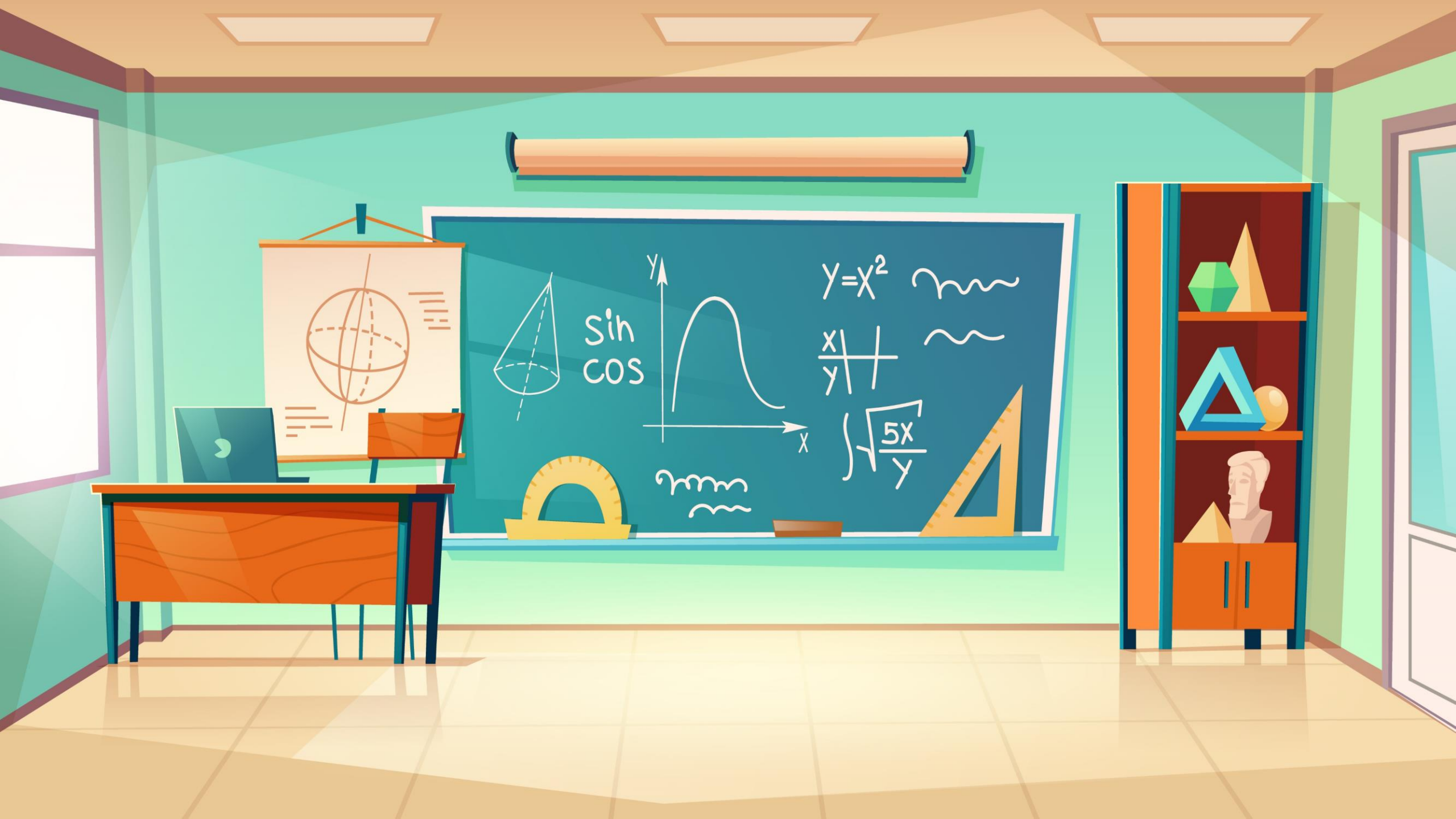
~~~~~  
~~~~~



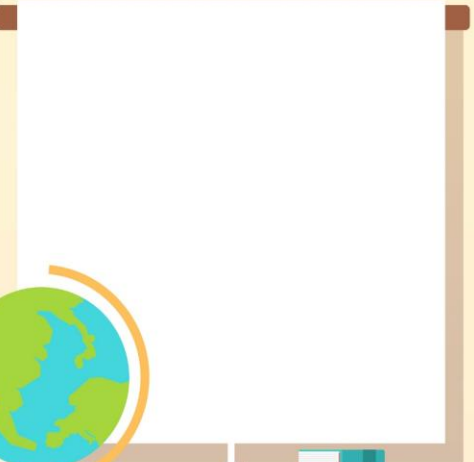
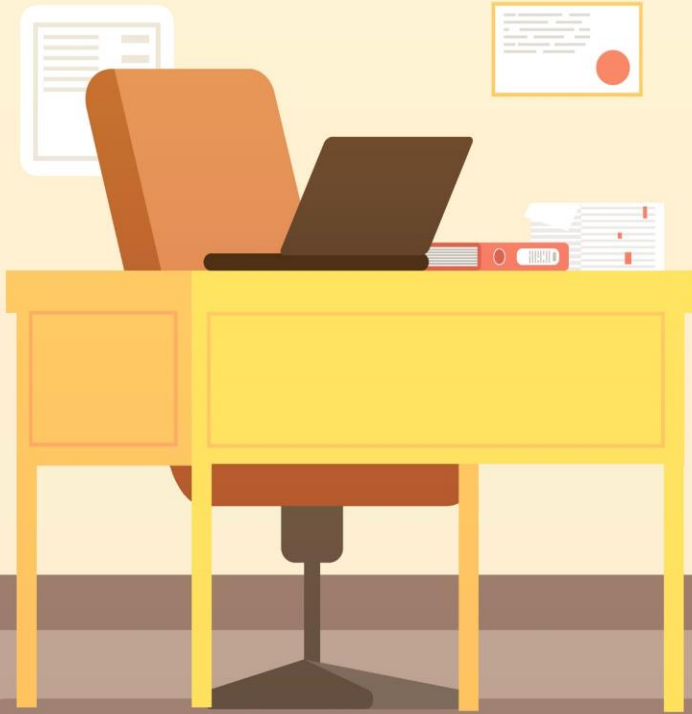


4 may, Monday
Chemistry
 $C + O_2 = CO_2$
 $S + O_2 = SO_2$

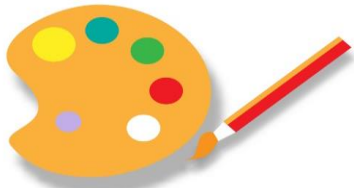
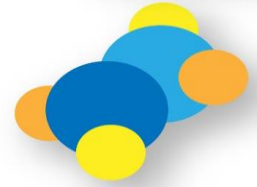
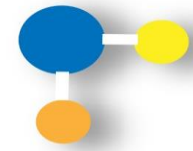
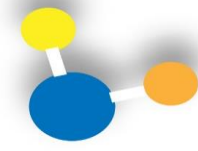
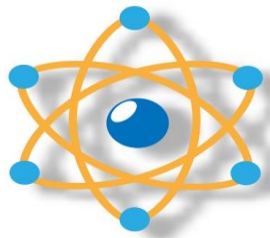


A large dark blue chalkboard containing several mathematical elements: a 3D cone on the left, the words "sin" and "cos" in the middle, a graph of a bell-shaped curve on a coordinate system with x and y axes, the equation $y = x^2$ with a wavy line, a fraction $\frac{x}{y}$ with a plus sign, a square root expression $\sqrt{\frac{5x}{y}}$, a yellow protractor at the bottom left, and a yellow set square at the bottom right. There are also some scribbled lines on the board.

CURSO 2020/2021

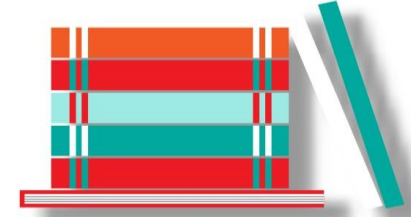


$2+3$

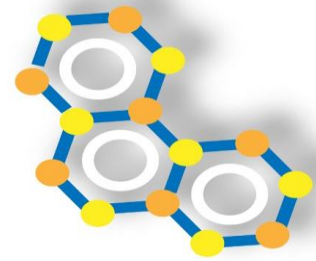


CURSO

2021/2022



ABC

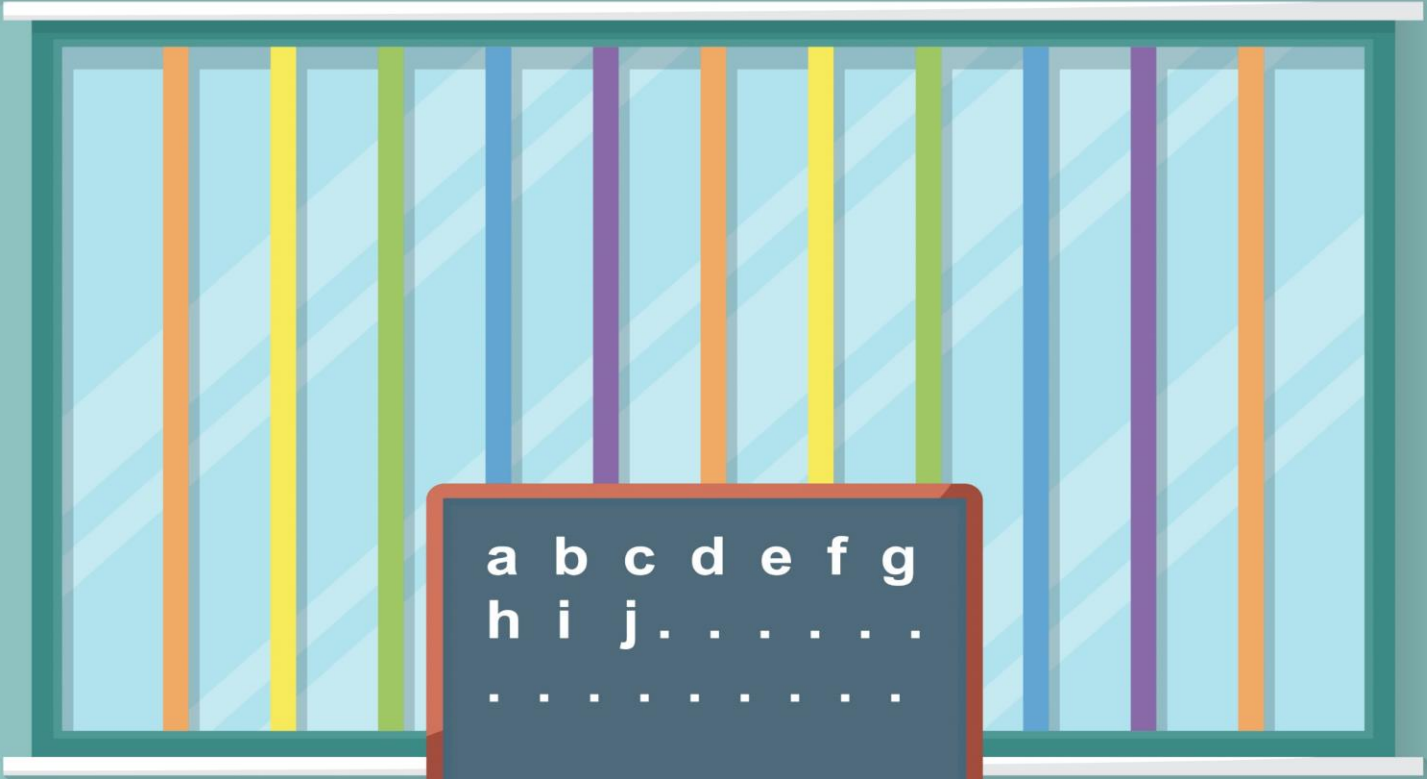


AB

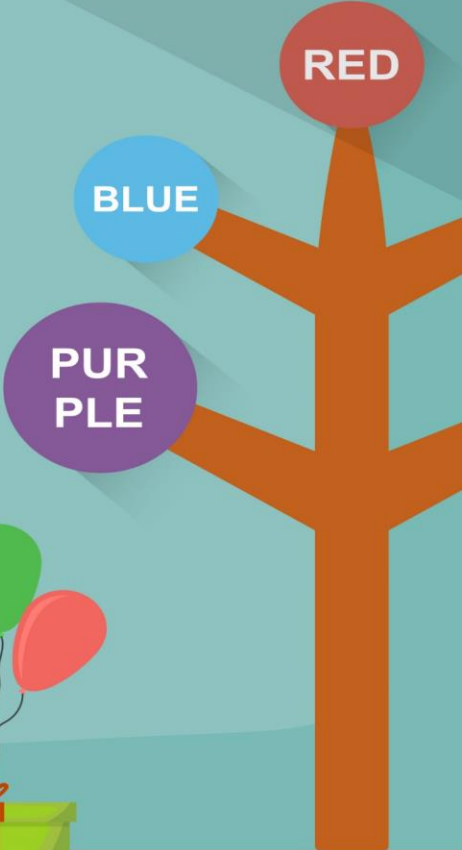




A B C
E D



a b c d e f g
h i j
.



A B C D E F G

1 2 3 4 5 6 7





CURSO 2021/2022

BIENVENIDOS AL CURSO 2021/2022

