



auto__ús



cuer__o



cor__ata



nie__e

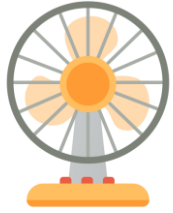


__olcán

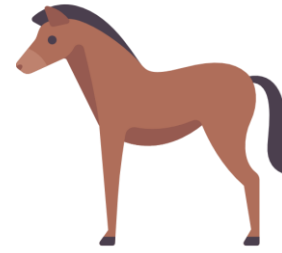


__otella





___entilador



ca___allo



___aloncesto



___ela

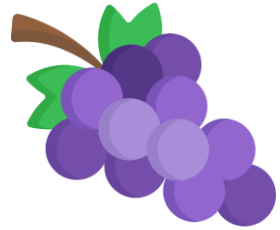


___iolín



___icicleta





u ___ as



ár ___ ol



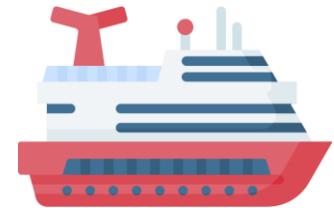
llu ___ ia



glo ___ o



___ entana



___ arco





a__razo



ham__urguesa



o__illo



o__eja



ca__bra

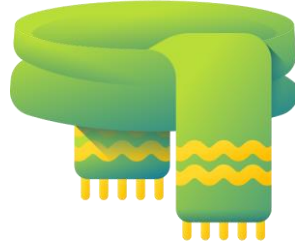


bom__ero





ca__aña



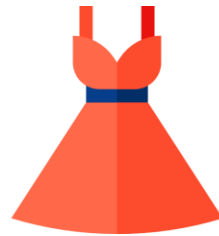
__ufanda



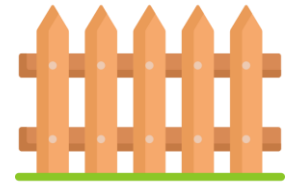
nu__e



a__uelos



__estido



__alla

