

Habilidades fonológicas

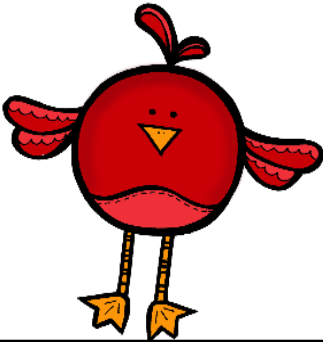


Colorea las sílabas correctas y tacha las que no son.



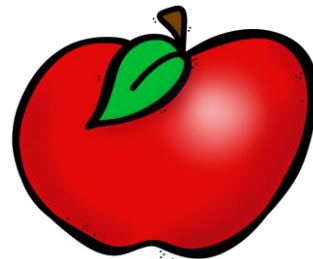
ar lla la di

be ca ta llo



pa ga ja ro

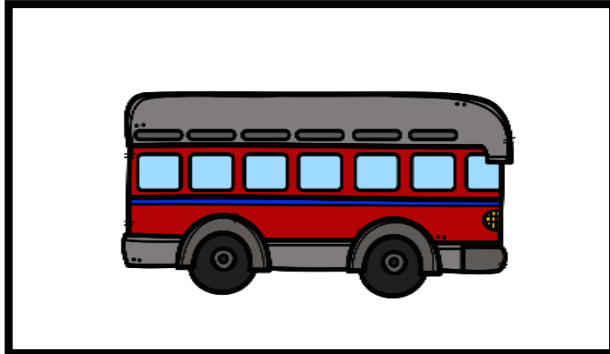
za sa la ca ba



es ta pan pá ga ja ros

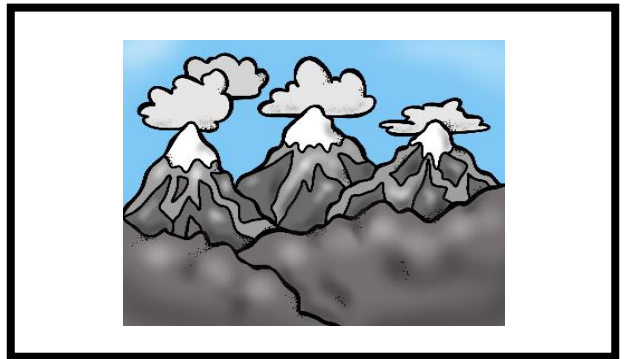
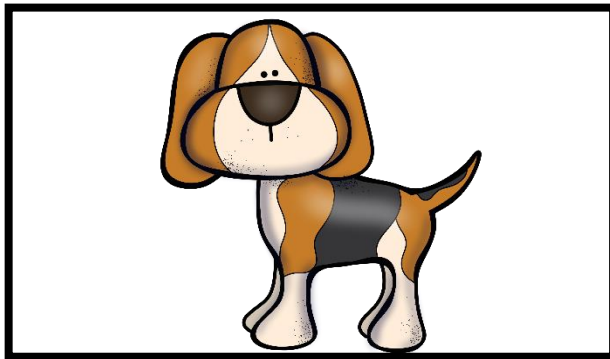
na man ca na

Colorea las sílabas correctas y tacha las que no son.



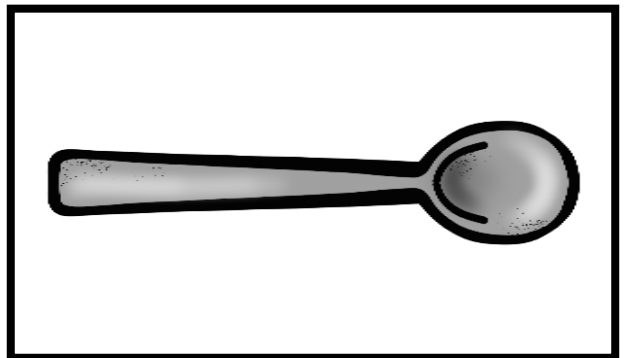
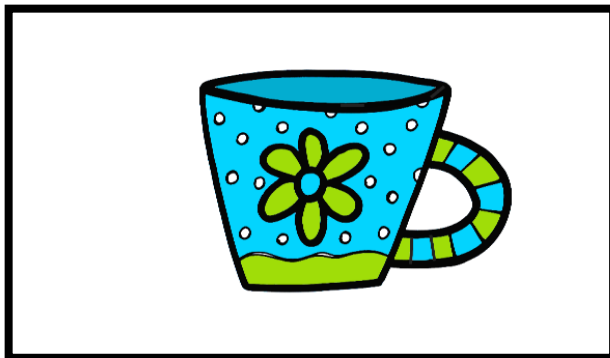
au	bús	to	gús
----	-----	----	-----

bue	la	a	que
-----	----	---	-----



pe	ro	rro
----	----	-----

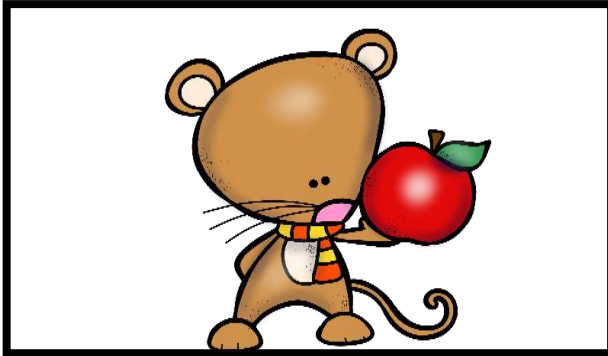
mon	ña	ta	nia
-----	----	----	-----



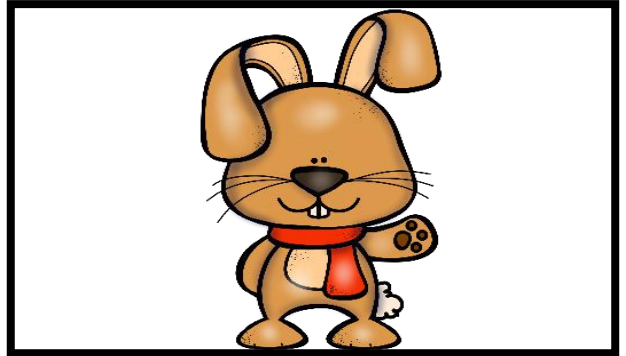
ta	sa	za
----	----	----

cha	cu	tu	ra
-----	----	----	----

Colorea por la letra que empieza.



r	rr	t
---	----	---



c	s	t
---	---	---



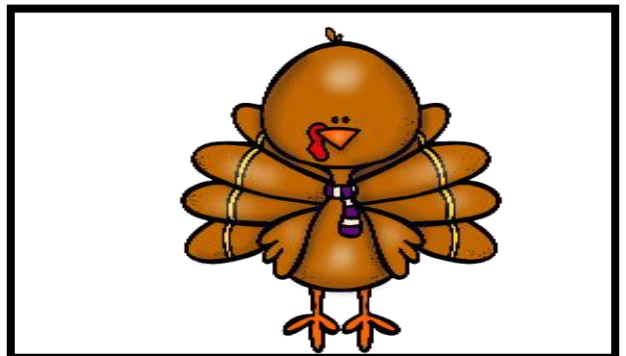
s	c	z
---	---	---



i	e	h
---	---	---



c	e	t
---	---	---



r	m	s
---	---	---

Colorea por la letra que empieza.



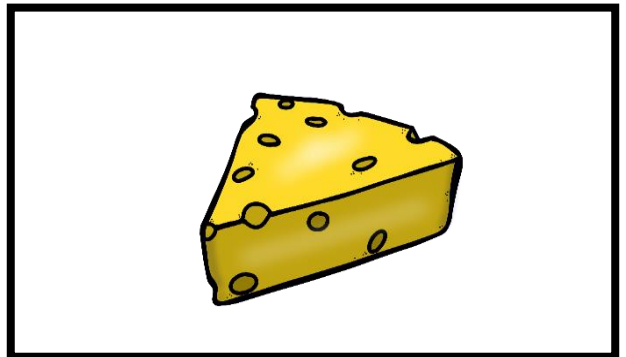
a gu lu



c t h



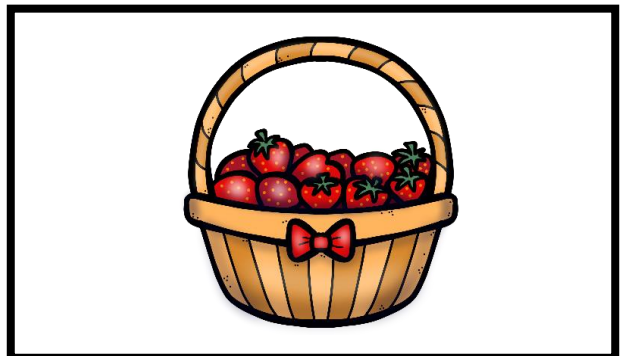
v ll ch



que c h

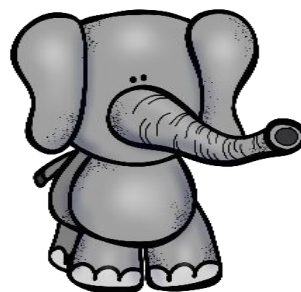
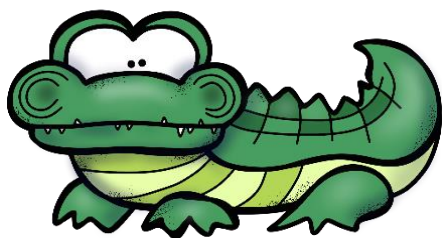


b v z



c z h

Separa estas palabras en sílabas.



--	--	--	--

--	--	--	--



--	--	--

--	--	--	--



--	--	--

--	--	--